



Shackles - Commercial - Mild Steel

As the name suggests, these shackles are a cost effective alternative to the other shackles from our comprehensive range. They are predominantly used in the marine and agricultural markets and it is important to note that these shackles are untested and manufactured from a base mild steel material. They are given a commercial electro-galvanized coating with limited corrosion protection.

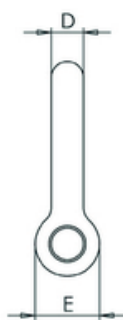
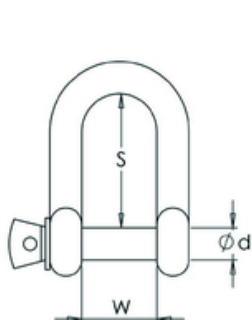
Commercial shackles are easily identified by the pin and body material being manufactured from the same diameter and should **not** be used for safety critical or lifting applications.

Commercial Dee Shackle

Material: Grade 3 Mild Steel

Finish: Electro-Galvanized

Test: Untested



Part Code	D (mm)	d (mm)	W (mm)	E (mm)	S (mm)	Weight per 100 (Kg)
202.01.06	6	6	12	12	24	2.5
202.01.08	8	8	16	16	32	5.5
202.01.10	10	10	20	20	40	10.0
202.01.12	12	12	24	24	48	18.5
202.01.16	16	16	32	32	64	43.0
202.01.20	20	20	38	38	76	72.0
202.01.22	22	22	44	44	88	118.0
202.01.25	25	25	50	50	100	157.0

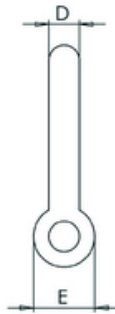
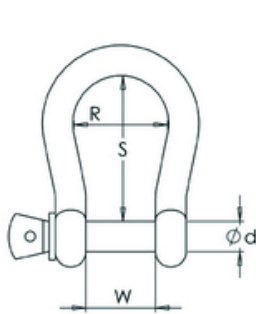


Commercial Bow Shackle

Material: Grade 3 Mild Steel

Finish: Electro-Galvanized

Test: Untested



Part Code	D (mm)	d (mm)	W (mm)	E (mm)	S (mm)	R (mm)	Weight per 100 (Kg)
202.02.06	6	6	12	12	24	18	2.5
202.02.08	8	8	16	16	32	24	6.0
202.02.10	10	10	20	20	40	30	10.5
202.02.12	12	12	24	24	48	36	18.5
202.02.16	16	16	32	32	64	48	47.5
202.02.20	20	20	38	40	80	57	79.0
202.02.22	22	22	44	44	88	66	116.0
202.02.25	25	25	50	50	100	75	171.0