



Forestry Equipment

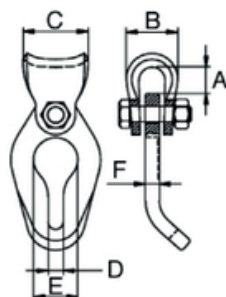
Grade 8 Chain-Rope Connector

Manufactured in accordance with EN 1677

Test: Batch Tested and Certified

Finish: Red Painted

F.O.S: 4 : 1



Part Code	W.L.L. (t)	A (mm)	B (mm)	C (mm)	D (mm)	E (mm)	F (mm)	Weight each (Kg)
MB8.080.RC	2.00	20	39	49	11.5	33.5	10.5	0.65
MB8.100.RC	3.15	21	47	57	13.0	40.0	10.5	1.0

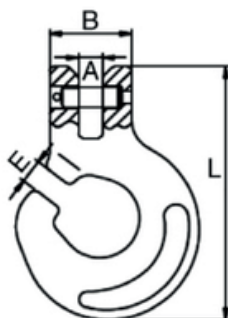
Grade 8 Clevis Forest Hook

Manufactured in accordance with EN 1677

Test: Batch Tested and Certified

Finish: Red Painted

F.O.S: 4 : 1



Part Code	W.L.L. (t)	A (mm)	B (mm)	E (mm)	L (mm)	Weight each (Kg)
MB8.080.CFH	2.00	9.5	35	10.5	95.5	0.42
MB8.100.CFH	3.15	13.0	44	13.0	137.0	0.92



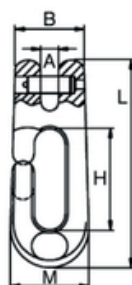
Grade 8 Clevis Choker Hook

Manufactured in accordance with EN 1677

Test: Batch Tested and Certified

Finish: Red Painted

F.O.S: 4 : 1



Part Code	W.L.L. (t)	A (mm)	B (mm)	H (mm)	M (mm)	L (mm)	Weight each (Kg)
MB8.080.CC	2.00	10.5	41	60	46.5	123	0.68

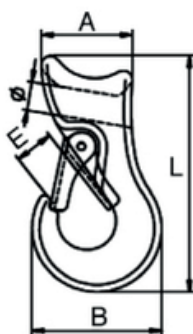
Grade 8 Clevis Sliding Choke Hook

Manufactured in accordance with EN 1677

Test: Batch Tested and Certified

Finish: Red Painted

F.O.S: 4 : 1



Part Code	W.L.L. (t)	Max. Rope Dia. (mm)	A (mm)	B (mm)	E (mm)	L (mm)	Weight each (Kg)
MB8.130.SCH	1.6	13	50.0	71	21	132.0	0.68
MB8.160.SCH	2.0	16	63.5	79	23	151.5	1.21
MB8.200.SCH	3.0	20	69.0	103	29	170.0	1.99
MB8.250.SCH	5.0	25	85.7	135	38	213.0	4.18

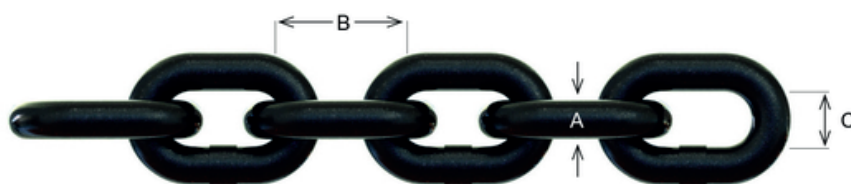


William Hackett

Chain Products Limited



Grade 8 Short Link Chain



Part Code	Chain Size (mm)	A (mm)	B (mm)	C (mm)	W.L.L. (t)	Weight per M (Kg)
MB8.080	8	8	24	12	2.00	1.4
MB8.100	10	10	30	15	3.15	2.2

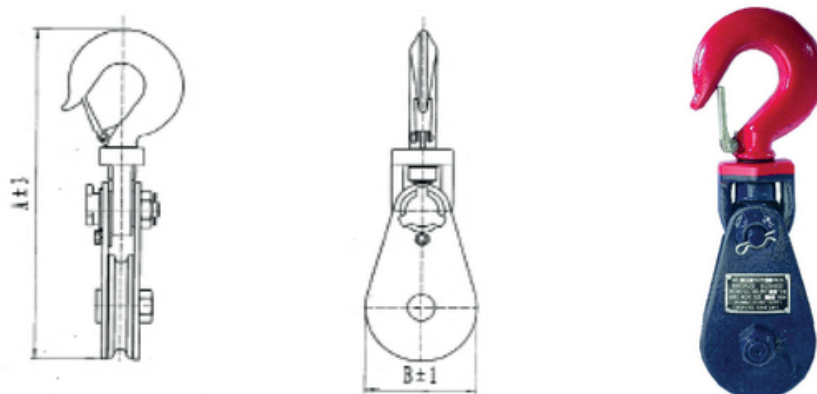
Lightweight Heavy Duty Snatch Block - Hook Fitting

Head Fitting: Swivel Hook c/w Latch

Test: Batch Tested and Certified

Finish: Red and Blue Painted

F.O.S: 4 : 1



Part Code	W.L.L. (t)	Rope Diameter (mm)	A (mm)	B (mm)	Weight each (Kg)
301.01.10	2.0	10	245	76	2.3
301.01.13	4.0	13	366	108	5.7

William Hackett Chain Products Limited

Maypole Fields, Cradley
West Midlands B63 2QE

e: info@williamhackett.co.uk

www.williamhackett.co.uk

t: 01384 569431 f: 01384 639157

Better connected with William Hackett



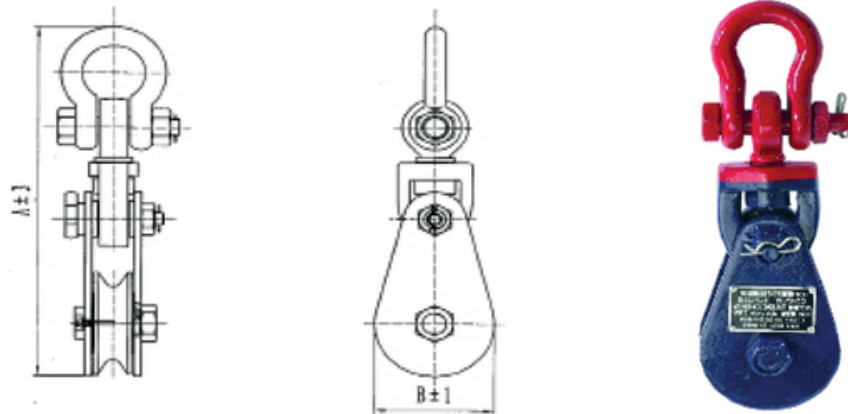
Lightweight Heavy Duty Snatch Block - Shackle Fitting

Head Fitting: Swivel Shackle

Test: Batch Tested and Certified

Finish: Red and Blue Painted

F.O.S: 4 : 1



Part Code	W.L.L. (t)	Rope Diameter (mm)	A (mm)	B (mm)	Weight each (Kg)
301.02.10	2.0	10	245	76	2.3
301.02.13	4.0	13	366	108	5.7

Chain Assemblies And Spare Parts

Pre-assembled Choker Chain Assemblies, supplied in 1.5m and 2m lengths.

8mm chain fitted with Clevis Forest Hook and Clevis Choke Hook or Clevis Forest Hook and 'T' Bar.

10mm chain fitted with Clevis Forest Hook and 'T' Bar.



Other assemblies available upon request.



Spare Parts For Chain-Rope Connector Assembly

Manufactured in accordance with EN 1677

Test: Batch Tested and Certified

Finish: Red Painted

F.O.S: 4 : 1



Part Code	Chain Size (mm)	Description	Weight each (Kg)
MB8.080.RCP	8	Chain-Rope Connector Plate	0.35
MB8.080.RCS	8	Chain-Rope Connector Slider c/w Bolt	0.30
MB8.100.RCP	10	Chain-Rope Connector Plate	0.55
MB8.100.RCS	10	Chain-Rope Connector Slider c/w Bolt	0.45